

COMBIFIX

Insex



- high quality furniture fittings





SISO A/S
MILEPARKEN 11
DK - 2740 SKOVLUNDE
(COPENHAGEN)
DENMARK
PHONE: (+45) 45 830 900
FAX: (+45) 45 830 444

DISTRIBUTOR

CONTENTS

COMBIFIX HEADS

4



FIFTEEN SCREWS & BOLTS

9



CROSS DOWELS

10



INSEX SCREWS & MUSHROOM SCREWS

11



INSEX COVERS & INSEX COLLARS

12



INSEX COLLARS, DRILL BIT & LOCATING PINS

13



INSEX KEYS & WASHERS

14



HEX NUTS, WRENCH KEY & NAILS

15



BUSHINGS

16



SCREWS

21

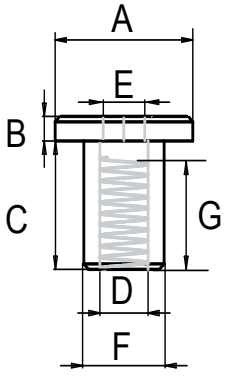


HANGERBOLTS & TOOL FOR INSERTING

23



BRASS COMBIFIX HEADS

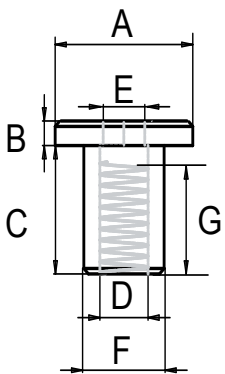


BRASS COMBIFIX HEAD #1007 M6 W/OPEN HEX HOLE

Material: Brass
 Finish: Brass, Natural
 Type: Flat head with 5 mm open hex hole



A	B	C	D	E	F	G	Item No.
Ø 12 mm	2 mm	10 mm	M6	5 mm	Ø 8 mm	7 mm	# 12.09.090

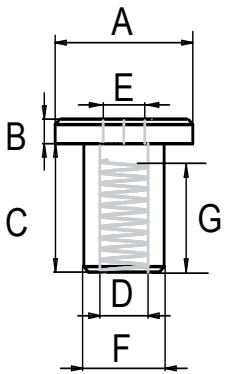


BRASS COMBIFIX HEAD #1011 M6 W/OPEN HEX HOLE

Material: Brass
 Finish: Brass, Natural
 Type: Flat head with 5 mm open hex hole



A	B	C	D	E	F	G	Item No.
Ø 15 mm	2,25 mm	9 mm	M6	5 mm	Ø 9 mm	7 mm	# 12.09.130



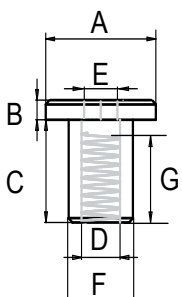
BRASS COMBIFIX HEAD #1011 M6 W/CLOSED HEX HOLE

Material: Brass
 Finish: Brass Plated (BPL) or Nickel Plated (NPL)
 Type: Flat head with 5 mm closed hex hole



A	B	C	D	E	F	G	NPL	BPL
Ø 15 mm	2 mm	10 mm	M6	5 mm	Ø 9 mm	7 mm	# 12.09.132	# 12.09.131

BRASS COMBIFIX HEAD #1012 M6 W/OPEN HEX HOLE



Material: Brass or Stainless Steel (SS) AISI 304
 Finish: Brass, Natural and SS, Natural
 Type: Flat head with 4 or 5 mm open hex hole



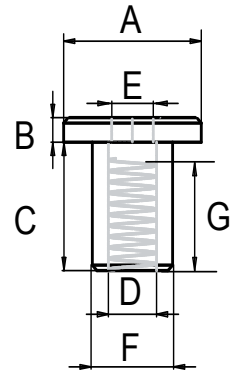
A	B	C	D	E	F	G	SS	Brass
Ø 15 mm	2,25 mm	11,75 mm	M6	5 mm	Ø 9 mm	8,5 mm	on request	# 12.09.170
Ø 15 mm	2,25 mm	11,75 mm	M6	4 mm	Ø 9 mm	7 mm	# 12.09.175	on request

BRASS COMBIFIX HEAD #1012 M6 W/CLOSED HEX HOLE

Material: Brass
 Finish: Brass Plated (BPL) or Nickel Plated (NPL)
 Type: Flat head with 5 mm closed hex hole



A	B	C	D	E	F	G	NPL	BPL
Ø 15 mm	2 mm	12 mm	M6	5 mm	Ø 9 mm	7 mm	# 12.09.174	# 12.09.173

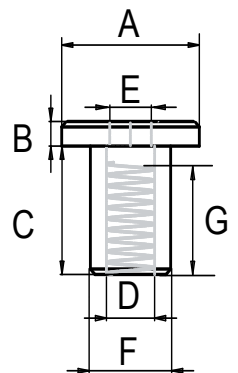


BRASS COMBIFIX HEAD #1013 M6 W/OPEN HEX HOLE

Material: Brass
 Finish: Brass, Natural
 Type: Flat head with 5 mm open hex hole



A	B	C	D	E	F	G	SS	Brass
Ø 15 mm	2,25 mm	18 mm	M6	5 mm	Ø 9 mm	12 mm	# 12.09.208	# 12.09.210

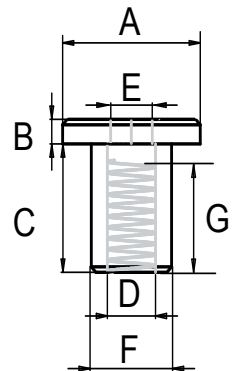


BRASS COMBIFIX HEAD #1013 M6 W/CLOSED HEX HOLE

Material: Brass
 Finish: Brass Plated (BPL) or Nickel Plated (NPL)
 Type: Flat head with 5 mm closed hex hole



A	B	C	D	E	F	G	NPL	BPL
Ø 15 mm	2 mm	18 mm	M6	5 mm	Ø 9 mm	13 mm	# 12.09.213	# 12.09.212

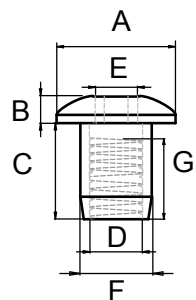


BRASS COMBIFIX HEAD #1015 M6 W/OPEN HEX HOLE

Material: Brass or Stainless Steel (SS) AISI 304
 Finish: Brass, Natural and SS, Natural
 Type: Dome head with 5 mm open hex hole

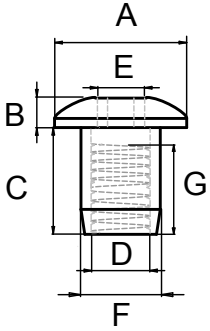


A	B	C	D	E	F	G	SS	Brass
Ø 13 mm	2,50 mm	10,50 mm	M6	5 mm	Ø 8 mm	9 mm	# 12.09.265	# 12.09.250



BRASS COMBIFIX HEADS

BRASS COMBIFIX HEAD #1015 M6 W/CLOSED HEX HOLE

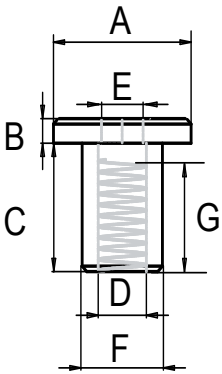


Material: Brass
 Finish: Brass Plated (BPL) or Nickel Plated (NPL)
 Type: Dome head with 5 mm closed hex hole



A	B	C	D	E	F	G	NPL	BPL
Ø 13 mm	3 mm	10 mm	M6	5 mm	Ø 8 mm	6 mm	# 12.09.252	# 12.09.251

BRASS COMBIFIX HEAD #1031 M6 W/OPEN HEX HOLE

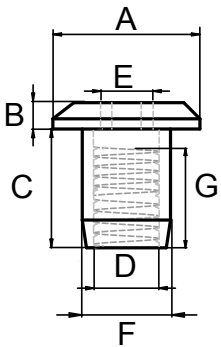


Material: Brass
 Finish: Brass, Natural
 Type: Flat head with 5 mm open hex hole



A	B	C	D	E	F	G	Item No.
Ø 19 mm	2 mm	12 mm	M6	5 mm	Ø 9 mm	10 mm	# 12.09.410

BRASS COMBIFIX HEAD #1042 M6 W/OPEN HEX HOLE

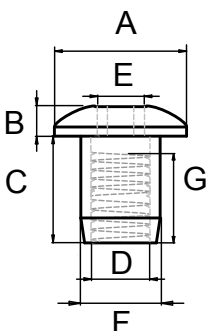


Material: Brass
 Finish: Brass, Natural
 Type: Flat head with 5 mm open hex hole



A	B	C	D	E	F	G	Item No.
Ø 19 mm	2 mm	8 mm	M6	5 mm	Ø 9 mm	6,5 mm	# 12.09.490

BRASS COMBIFIX HEAD #1046 M6 W/OPEN HEX HOLE



Material: Brass
 Finish: Brass, Natural
 Type: Dome head with 5 mm open hex hole



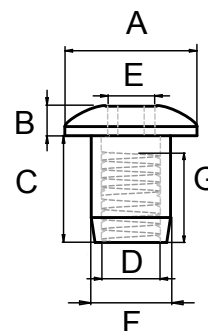
A	B	C	D	E	F	G	Item No.
Ø 19 mm	3 mm	10 mm	M6	5 mm	Ø 9 mm	7,5 mm	# 12.09.530

BRASS COMBIFIX HEAD #1060 M8 W/OPEN HEX HOLE

Material: Brass
 Finish: Brass, Natural
 Type: Dome head with 5 mm open hex hole



A	B	C	D	E	F	G	Item No.
Ø 17 mm	2,50 mm	11,5 mm	M8	5 mm	Ø 10 mm	8 mm	# 12.09.570

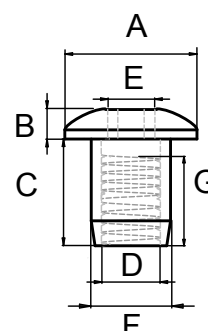


BRASS COMBIFIX HEAD #1062 M8 W/OPEN HEX HOLE

Material: Brass
 Finish: Brass, Natural
 Type: Dome head with 5 mm open hex hole



A	B	C	D	E	F	G	Item No.
Ø 30 mm	4 mm	7 mm	M8	5 mm	Ø 12 mm	6 mm	# 12.09.610

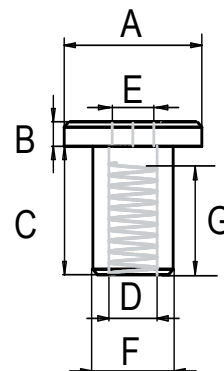


STEEL COMBIFIX HEAD # F-563 M6 W/CLOSED HEX HOLE

Material: Steel
 Finish: Brass Plated (BPL) or Yellow Zinc Plated 12 micron (YZP)
 Type: Flat head with 4 or 5 mm closed hex hole



A	B	C	D	E	F	G	BPL	YZP
Ø 15 mm	2 mm	12 mm	M6	4 mm	Ø 9 mm	7 mm	# 12.09.750	# 12.09.696
Ø 15 mm	2 mm	12 mm	M6	5 mm	Ø 9 mm	7 mm	# 12.09.700	on request
Ø 15 mm	2 mm	18 mm	M6	4 mm	Ø 9 mm	13 mm	on request	# 12.09.800
Ø 15 mm	2 mm	18 mm	M6	5 mm	Ø 9 mm	13 mm	# 12.09.802	on request

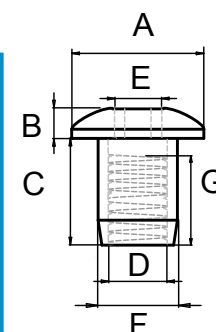


STEEL COMBIFIX HEAD # D-564 M6 W/CLOSED HEX HOLE

Material: Steel
 Finish: Brass Plated (BPL) or Nickel Plated (NPL)
 Type: Dome head with 5 mm closed hex hole

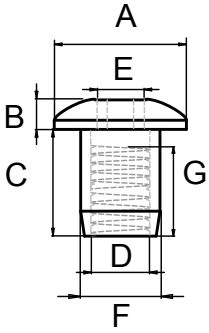


A	B	C	D	E	F	G	NPL	BPL
Ø 15 mm	2,5 mm	12 mm	M6	5 mm	Ø 9 mm	7 mm	# 12.09.829	on request
Ø 15 mm	2,5 mm	15 mm	M6	5 mm	Ø 9 mm	10 mm	on request	# 12.09.864



STEEL COMBIFIX HEADS

STEEL COMBIFIX HEAD # D-597 M6 W/CLOSED HEX HOLE



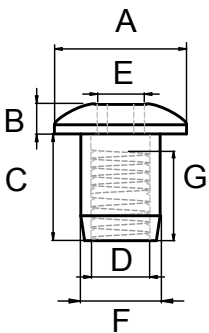
Material: Steel
 Finish: Brass Plated (BPL) or Black oxidized (BLK)
 (other finishes on request)



Type: Dome head with 5 mm closed hex hole

A	B	C	D	E	F	G	BPL	BLK
Ø 20 mm	3 mm	18 mm	M6	5 mm	Ø 9 mm	12 mm	# 12.09.937	# 12.09.935

STEEL COMBIFIX HEAD # D-637 M6 W/CLOSED HEX HOLE



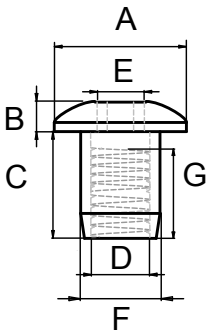
Material: Steel
 Finish: Yellow Zinc Plated 2-3 micron (YZP)
 (other finishes on request)



Type: Dome head with 5 mm Closed hex hole

A	B	C	D	E	F	G	YZP
Ø 15 mm	4 mm	8 mm	M6	5 mm	Ø 8 mm	5 mm	# 12.09.815

STEEL COMBIFIX HEAD # D-595 M8 W/CLOSED HEX HOLE



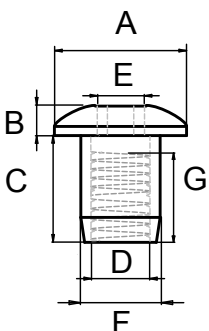
Material: Steel
 Finish: Brass Plated (BPL), Black oxidized (BLK)
 Bronze Plated (BRZ) or Nickel Plated (NPL)



Type: Dome head with 5 mm closed hex hole

A	B	C	D	E	F	G	BPL	BLK
Ø 20 mm	3 mm	16 mm	M8	5 mm	Ø 10 mm	12 mm	# 12.09.930	# 12.09.932
							NPL	BRZ
Ø 20 mm	3 mm	16 mm	M8	5 mm	Ø 10 mm	12 mm	# 12.09.933	# 12.09.934

STEEL COMBIFIX HEAD # D-602 M10 W/CLOSED HEX HOLE



Material: Steel
 Finish: Nickel Plated (NPL)
 (other finishes on request)

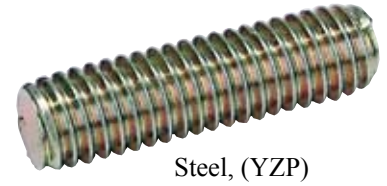


Type: Dome head with 5 mm closed hex hole

A	B	C	D	E	F	G	NPL
Ø 20 mm	4 mm	13 mm	M10	5 mm	Ø 13 mm	9 mm	# 12.09.950

THREADED BOLTS

Material:	Steel, Yellow Zinc Plated (other finishes on request) Stainless Steel, Natural Brass, Natural
Thread:	M6 or M8
Lengths:	From 18 up to 1000 mm
Item No.	12.08.123 etc.



Steel, (YZP)

FIFTEEN SCREWS

Material:	Steel, Yellow Zinc Plated (other finishes on request) Stainless Steel AISI 316 Brass, Natural
Head size:	Ø 15 x 2,5 mm. (Ø 13 & 17 mm on request)
Hex size:	4 mm
Thread:	M6 (M8 on request)
Lengths:	25/30/35/40/45/50/60/70/80/90/100 & 120 mm
Type:	With 3mm point or conical (see illustration)
Item No.	12.00.800 etc.



Stainless Steel
AISI 316

Steel, (YZP)



Conical



Point

FIFTEEN WOOD SCREWS

Material:	Steel, Yellow Zinc Plated (other finishes on request)
Head size:	Ø 15 x 2,5 mm
Hex size:	4 mm
Thread:	Ø 6,3 mm
Lengths:	40/50/60 and 70 mm (other sizes on request)
Type:	With point (see illustration)
Item No.	# 12.01.340 etc.



Stainless Steel
AISI 316

Steel, (YZP)



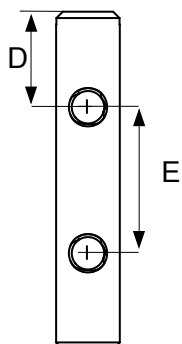
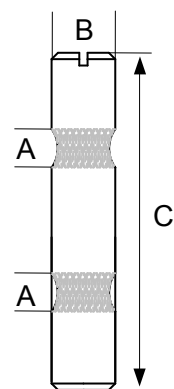
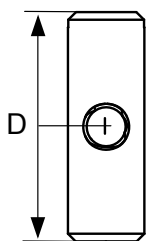
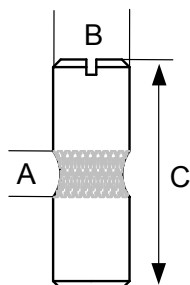
Point

CROSS DOWELS

CROSS DOWELS



Bright Zinc Plated



Material: Steel, Brass or Stainless Steel

Stainless Steel

Type: With slot

Finish: Steel, Yellow Zinc Plated (YZP)
Bright Zinc Plated (BZP), Brass, Natural
Stainless Steel, (SS), Natural

Yellow Zinc Plated

D* Distance from centre of hole to edge.

Brass



A	B	C	D*	Material	Finish	Item No.
M6	Ø 10 mm	13 mm	8/5 mm	Steel	Plain	# 12.07.006
M6	Ø 10 mm	14 mm	8/6 mm	Steel	BZP/YZP	# 12.07.030/31
M6	Ø 10 mm	14 mm	8/6 mm	Brass	Natural	# 12.07.041
M6	Ø 10 mm	14 mm	8/6 mm	SS	Natural	# 12.07.043
M6	Ø 10 mm	16 mm	10/6 mm	Steel	YZP	# 12.07.044
M6	Ø 10 mm	18 mm	12/6 mm	Steel	YZP/BZP	# 12.07.327/328
M6	Ø 10 mm	30 mm	20/10 mm	Steel	BZP	# 12.07.350
M6	Ø 10 mm	20 mm	10/10 mm	Steel	BZP/YZP	# 12.07.070/071
M6	Ø 10 mm	25 mm	12,5/12,5 mm	Steel	BZP	# 12.07.110
M6	Ø 10 mm	30 mm	15/15 mm	Steel	BZP	# 12.07.150
M6	Ø 10 mm	40 mm	20/20 mm	Steel	BZP	# 12.07.230
M6	Ø 10 mm	45 mm	22,5/22,5 mm	Steel	BZP	# 12.07.270
M8	Ø 12 mm	20 mm	10/10 mm	Steel	YZP	# 12.07.287
M8	Ø 12 mm	25 mm	12,5/12,5 mm	Steel	BZP	# 12.07.288
M8	Ø 12 mm	30 mm	15/15 mm	Steel	YZP	# 12.07.289
M8	Ø 12 mm	50 mm	25/25 mm	Steel	BZP/YZP	# 12.07.291/92
M8	Ø 12 mm	60 mm	30/30 mm	Steel	BZP	# 12.07.325

CROSS DOWEL NO. 3250 W/2 HOLES

Material: Steel

Type: With slot

Finish: Steel, Bright Zinc Plated (BZP)

D* Distance from centre of hole to edge.

Bright Zinc Plated



A	B	C	D*	E	Material	Finish	Item No.
M6	Ø 10 mm	60 mm	14 mm	c.c. 32 mm	Steel	BZP	# 12.07.465
M6	Ø 10 mm	60 mm	10 mm	c.c. 40 mm	Steel	BZP	# 12.07.500
M6	Ø 10 mm	82 mm	9 mm	c.c. 64 mm	Steel	BZP	# 12.07.570

MUSHROOM SCREWS

Material: Steel, Yellow Zinc or Black Oxidized
Other materials & finishes on request

Head size: Ø 15 mm

Hex size: 4 mm (5 mm on request)

Thread: M6 (M8 on request)

Lengths: 12/16/20/23/30/32/38/45/50/60/63/90 mm
(other lengths on request)

Type: Blunt (Point on request)

Item No. # 12.03.110 etc.



INSEX SCREWS

Material: Steel, Yellow Zinc, Brass Plated or Black Oxidized
Other materials & finishes on request

Head size: Ø 12 x 4 mm (counter sunk)

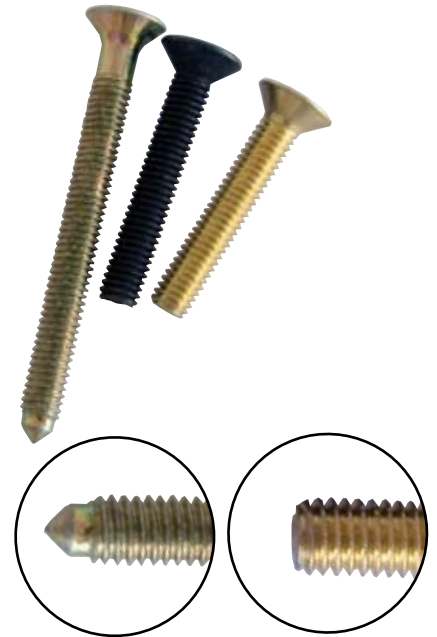
Hex size: 4 mm

Thread: M6 (M8 and M10 on request)

Lengths: 32/35/38/44/50/51/57/60/63/76/90/100/120/126 mm
(other lengths on request)

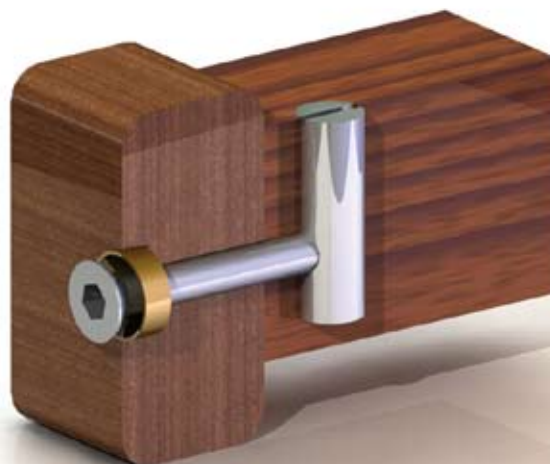
Type: Pointed or blunt (see illustration)

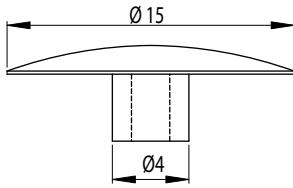
Item No. # 12.04.004 etc.



Point

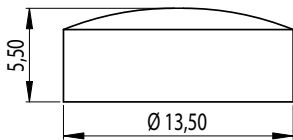
Blunt





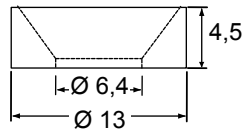
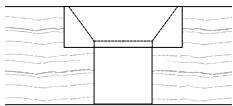
INSEX COVER CAPS

Material:	Plastic, black, white, beige (other colours on request)
Head size:	Ø 15mm, Dome
Pin:	Ø 4,2 mm for 4 mm hex hole
Item No.	12.05.005 etc.



INSEX WOOD PLUGS

Material:	Teak wood (other wood types on request)
Size:	Ø 13,5 x 5,5 m
Item No.	12.05.020

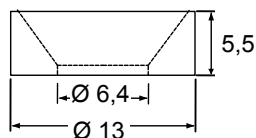


INSEX COLLARS - BRASS

Material:	Brass
Size:	Ø 13 x 4,5 mm x M6
Item No.	Brass Natrual # 12.05.036 Brass Black Oxidized # 12.05.039 Brass Nickel Plated # 12.05.038

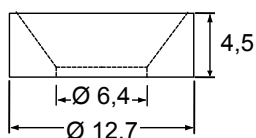


INSEX COLLARS - STEEL



Material:	Steel, Yellow Zinc
Size:	Ø 13 x 5,5 mm x M6
Item No.	# 12.05.034

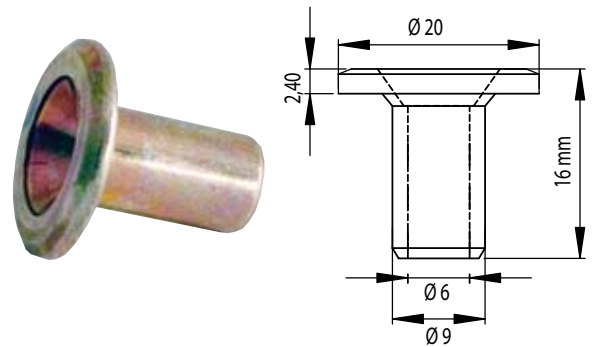
INSEX COLLARS - NYLON



Material:	Nylon, Black
Size:	Ø 12,7 x 4,5 mm X M6
Item No.	# 12.05.040

INSEX COLLARS - STEEL W/SHAFT

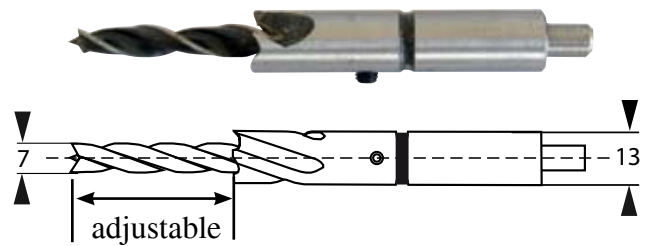
Material: Steel, Yellow Zinc
 Size: Ø 20 x 16 mm x M6
 Item No. # 12.05.070



DRILL BIT F/INSEX SCREWS & COLLARS

Twin set boring bits for Ø7mm and Ø13mm in one operation

Item No. # 12.18.010



LOCATING PINS

For Table Tops, etc.

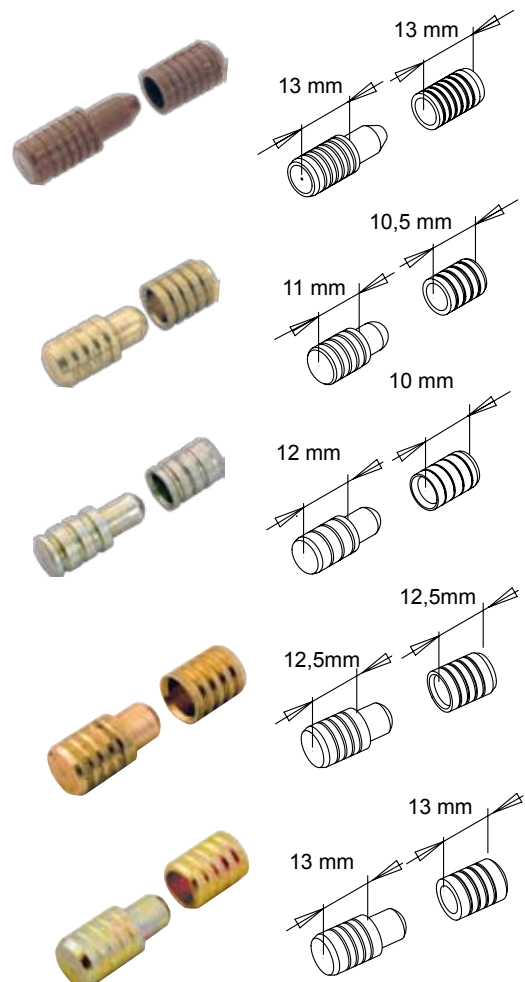
Material: Nylon
 Size: Ø 8 x 26 mm
 Finish: Brown
 Item No.: Male # 11.06.890
 Female # 11.06.891

Material: Brass
 Size: Ø 8 x 21,5 mm
 Finish: Natural
 Item No.: Male # 11.06.855
 Female # 11.06.856

Material: Steel
 Size: Ø 8 x 24 mm
 Finish: Yellow Zinc 12 Micron
 Item No.: Male & Female # 11.06.851

Material: Brass
 Size: Ø 10 x 25 mm
 Finish: Natural
 Item No.: Male # 11.06.857
 Female # 11.06.858

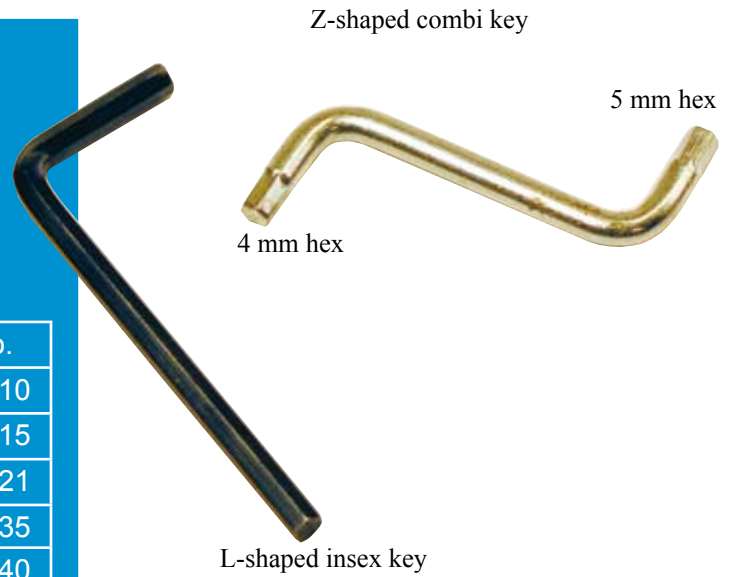
Material: Steel
 Size: Ø 10 x 26,2 mm
 Finish: Yellow Zinc 2-3 mycron
 Item No.: Male & Female # 11.06.854



INSEX KEYS

Material: Steel, Hardened
 Hex: 4 or 5 mm or combi key with 4 & 5 mm
 Finish: Bright Zinc Plated (BZP) or Black Zinc Plated
 Type: L-shaped or Z-shaped

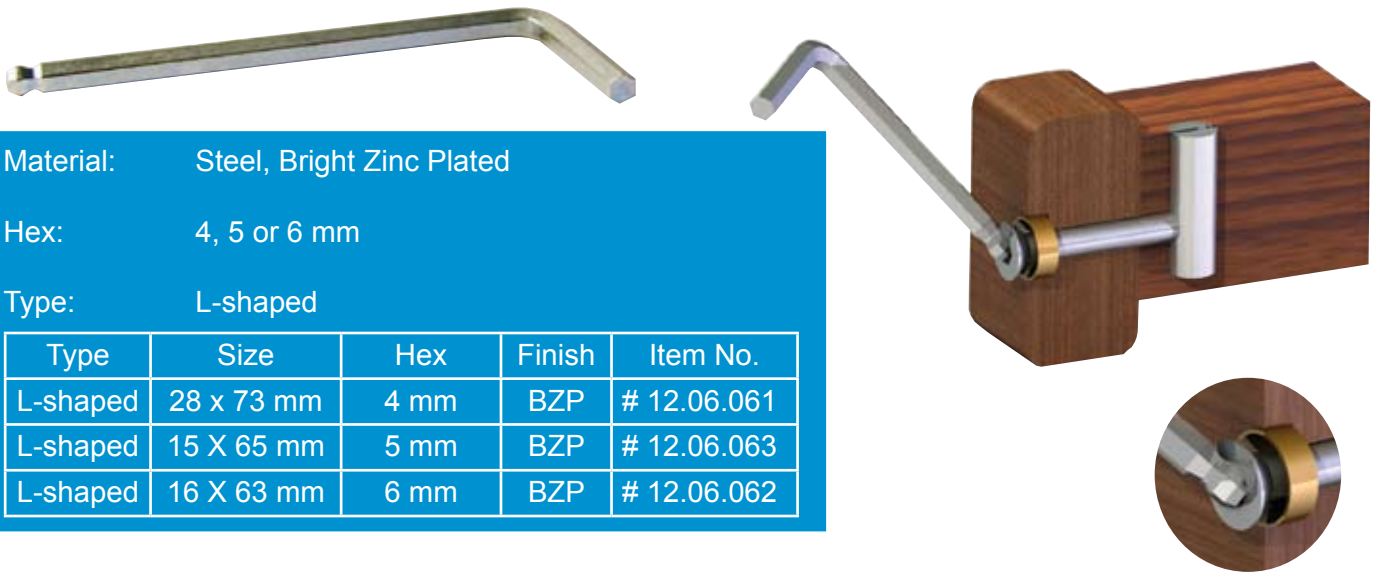
Type	Size	Hex	Finish	Item No.
L-shaped	23 x 65 mm	4 mm	Black	# 12.06.010
L-shaped	28 X 65 mm	4 mm	BZP	# 12.06.015
L-shaped	31 X 75 mm	5 mm	BZP	# 12.06.021
Z-shaped	37 X 48 mm	4 mm	BZP	# 12.06.035
Z-shaped	39 X 48 mm	5 mm	BZP	# 12.06.040
Z-shaped	35 X 50 mm	4 & 5 mm	BZP	# 12.06.027



IINSEX KEY W/BALL POINT

Material: Steel, Bright Zinc Plated
 Hex: 4, 5 or 6 mm
 Type: L-shaped

Type	Size	Hex	Finish	Item No.
L-shaped	28 x 73 mm	4 mm	BZP	# 12.06.061
L-shaped	15 X 65 mm	5 mm	BZP	# 12.06.063
L-shaped	16 X 63 mm	6 mm	BZP	# 12.06.062



WASHERS

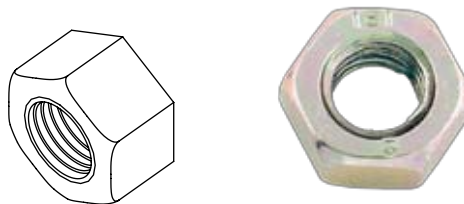
Material: Steel, Yellow Zinc Plated or Bright Zinc Plated
 Brass, Natural
 Stainless Steel, Natural
 Sizes: Inner diameter 6,4/8,4 & 10,5 mm
 Type: Flat washer DIN 125-A
 Spring washer DIN 127
 Serrated lock washer DIN 6798A
 Item No. 12.13.294 etc.



HEXAGONAL NUT DIN 934

Material: Steel
Finish: Yellow Zinc or Bright Zinc

Size: Item No.:
M6 # 12.11.905/906
M8 # 12.12.015/16
M10 # 12.12.026/27

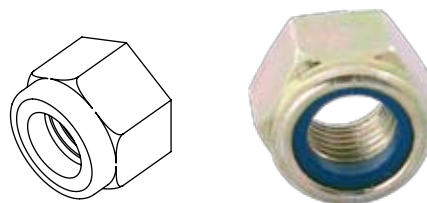


M6 to M10

HEXAGONAL NUT WITH NYLON RING DIN 985

Material: Steel and nylon
Finish: Yellow Zinc or Bright Zinc

Size: Item No.:
M6 # 12.12.421
M8 # 12.12.440
M10 # 12.12.445



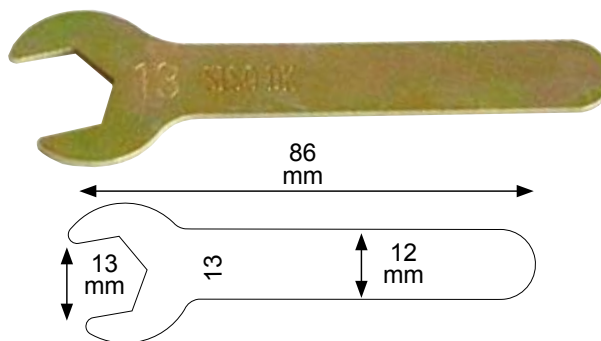
M6 to M10

WRENCH KEY F/HEX NUTS

Material: Steel Yellow Zinc Plated

Hex: 8 mm (others on request)

Item No.: Hardened steel # 12.06.155
Unhardened steel # 12.06.150

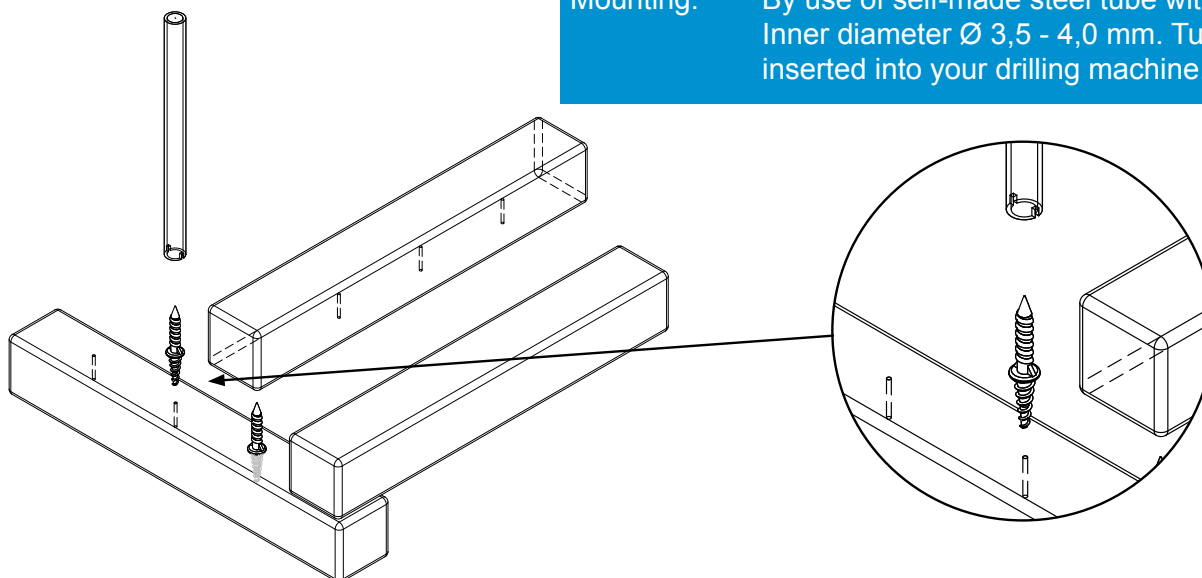


DOUBLE POINTED STEEL NAILS

Application: As a concealed connector for slats
Material: Steel, Yellow Zinc Plated

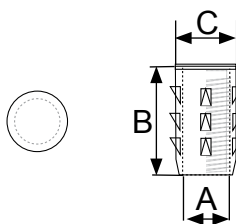
Sizes: Ø 3,5 x 9 x 15 mm # 12.20.040
Ø 4,0 x 13 x 18 mm # 12.20.050

Mounting: By use of self-made steel tube with slot.
Inner diameter Ø 3,5 - 4,0 mm. Tube is to be inserted into your drilling machine.



BUSHINGS

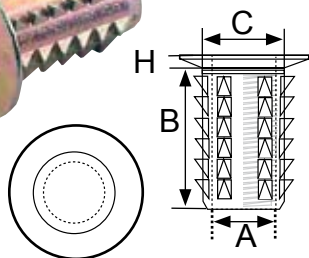
KNOCK IN BUSHING »A«



Material: Zamak, Yellow Zinc Plated (YZP)
 Type: Knock in. No collar

A	B	C	Finish	Item No.
M4	10 mm	Ø 5 mm	YZP	# 12.09.990

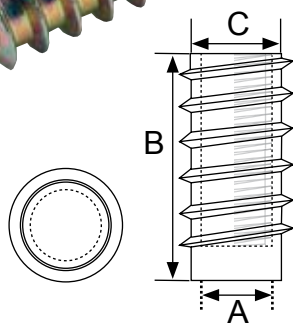
KNOCK IN BUSHING »BI«



Material: Zamak, Yellow Zinc Plated (YZP)
 Type: Knock in. With countersunk collar

A	B	C	H = Head	Finish	Item No.
M8	20 mm	Ø 10 mm	Ø 19 x 3 mm	YZP	# 12.10.000

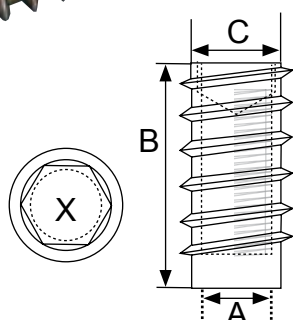
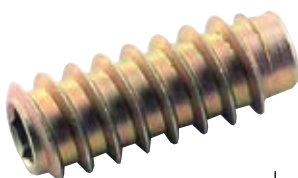
SCREW IN BUSHING »BL«



Material: Steel, Yellow Zinc Plated (YZP)
 Type: Screw in by use of insert tool # 12.10.315.
 Closed end & no collar

A	B	C	Finish	Item No.
M8	30 mm	Ø 11,5 mm	YZP	# 12.10.179
M8	39 mm	Ø 11,5 mm	YZP	# 12.10.180

SCREW IN BUSHING »BL SK«



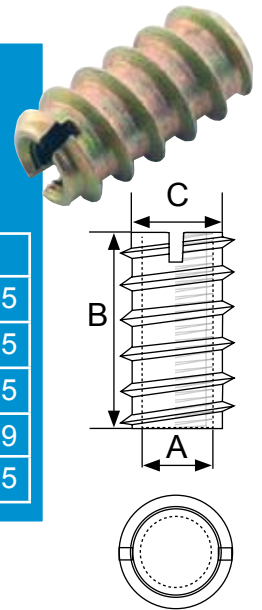
Material: Steel, Yellow Zinc Plated (YZP)
 Type: Screw in by use of hex key. Closed end & no collar

A	B	C	X = Hex	Finish	Item No.
M8	30 mm	Ø 11,5 mm	8 mm	YZP	# 12.10.176
M8	39 MM	Ø 11,5 mm	8 mm	YZP	# 12.10.177

SCREW IN BUSHING »C«

Material: Brass, Natural or Steel, Yellow Zinc Plated (YZP)
 Type: Screw in with slot. No collar

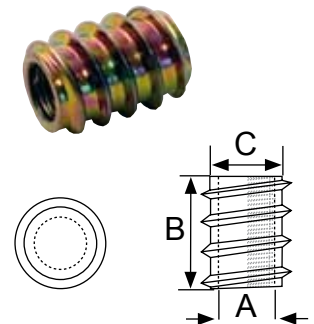
A	B	C	Brass	A	B	C	YZP
M4	8,0 mm	Ø 4,75 mm	# 12.10.002	M6	10 mm	Ø 8 mm	# 12.10.075
M6	14,5 mm	Ø 8 mm	# 12.10.106	M6	12 mm	Ø 8 mm	# 12.10.095
A	B	C	BZP	M6	14,5 mm	Ø 8 mm	# 12.10.105
M4	10 mm	Ø 6 mm	# 12.10.008	M6	24 mm	Ø 9 mm	# 12.10.109
M8	15 mm	Ø 10 mm	# 12.10.151	M8	20 mm	Ø 10 mm	# 12.10.175



SCREW IN BUSHING »CV«

Material: Steel, Yellow Zinc Plated (YZP)
 Type: Screw in by use of hex key. No collar

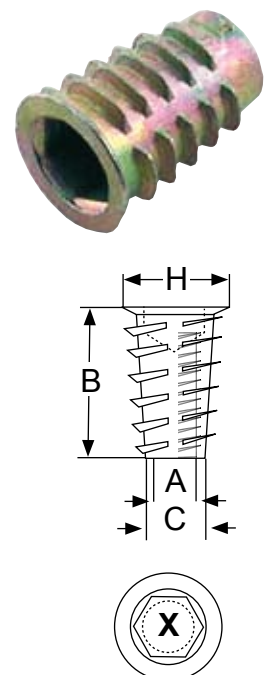
A	B	C	YZP
M6	12 mm	Ø 8 mm	# 12.10.096
M6	15 mm	Ø 8 mm	# 12.10.097



SCREW IN BUSHING »D«

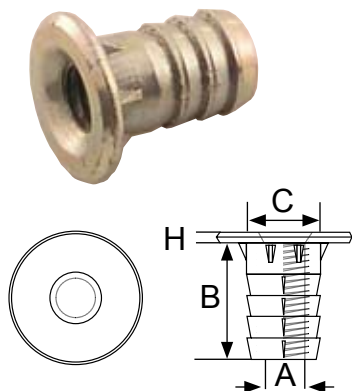
Material: Zamak, Yellow Zinc Plated (YZP)
 Type: Screw in by use of hex key. With collar

A	B	C	H = Head	Finish	X = Hex	Item No
M4	10 mm	Ø 5,5 mm	Ø 8,5 mm	YZP	4 x 3,5 mm	# 12.10.185
M5	10 mm	Ø 7 mm	Ø 11 mm	YZP	5 x 3,5 mm	# 12.10.186
M6	10 mm	Ø 8 mm	Ø 12 mm	YZP	6 x 3,5 mm	# 12.10.188
M6	13 mm	Ø 8 mm	Ø 12 mm	YZP	6 x 3,5 mm	# 12.10.191
M6	16 mm	Ø 8 mm	Ø 12 mm	YZP	6 x 3,5 mm	# 12.10.195
M6	20 mm	Ø 8 mm	Ø 12 mm	YZP	6 x 3,5 mm	# 12.10.211
M8	13 mm	Ø 10 mm	Ø 14,5 mm	YZP	8 x 4,5 mm	# 12.10.215
M8	20 mm	Ø 10 mm	Ø 14,5 mm	YZP	8 x 5,5 mm	# 12.10.217
M10	25 mm	Ø 12 mm	Ø 16 mm	YZP	10 x 7,0 mm	# 12.10.219



BUSHINGS

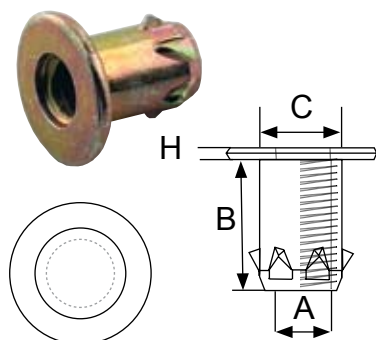
KNOCK IN BUSHING »DR«



Material: Steel, Yellow Zinc Plated (YZP) or Bright Zinc Plated (BZP)
 Type: Knock in. With collar

A	B	C	H = Head	YZP	BZP
M6	14 mm	Ø 8,3 mm	Ø 14 x 1,5 mm	# 12.10.710	# 12.10.711
M8	16 mm	Ø 10,5 mm	Ø 19 x 2,5 mm	# 12.10.721	# 12.10.720
M10	17 mm	Ø 12,5 mm	Ø 22 x 2,5 mm	# 12.10.730	# 12.10.731

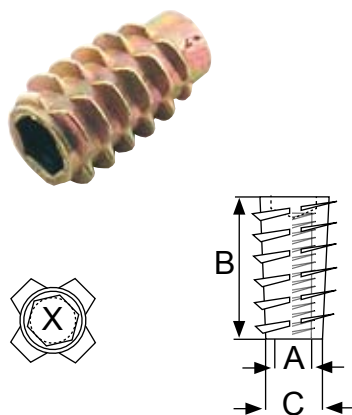
KNOCK IN BUSHING »DRN«



Material: Steel, Yellow Zinc Plated (YZP) or Bright Zinc Plated (BZP)
 Type: Knock in. With collar

A	B	C	H = Head	YZP	BZP
M6	14 mm	Ø 8,5 mm	Ø 15 x 2 mm	# 12.10.712	# 12.10.713
M8	16 mm	Ø 11 mm	Ø 19 x 2,25 mm	# 12.10.723	# 12.10.722

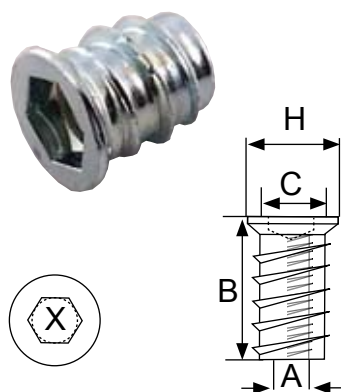
SCREW IN BUSHING »E«



Material: Zamak, Yellow Zinc Plated (YZP)
 Type: Screw in by use of hex key. No collar

A	B	C	X = Hex	Item NO.
M6	13 mm	Ø 7,5 mm	6 x 4,5 mm	# 12.10.222
M6	20 mm	Ø 7,5 mm	6 x 5,7 mm	# 12.10.223
M8	13 mm	Ø 10,5 mm	8 x 5,0 mm	# 12.10.225
M8	20 mm	Ø 10,5 mm	8 x 5,5 mm	# 12.10.226
M8	25 mm	Ø 10,5 mm	8 x 5,5 mm	# 12.10.227

SCREW IN BUSHING »M«



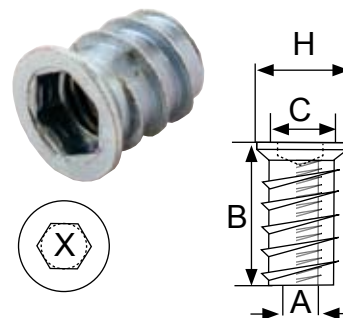
Material: Steel, Bright Zinc Plated (BZP)
 Type: Screw in by use of hex key. With countersunk collar

A	B	C	X = Hex	H = Head	Item No.
M6	12 mm	Ø 8 mm	6 X 2 mm	Ø 9,8 mm	# 12.10.258
M6	12 mm	Ø 8 mm	6 X 3 mm	Ø 12 mm	# 12.10.259
M6	15 mm	Ø 8 mm	6 X 3 mm	Ø 12 mm	# 12.10.260
M6	20 mm	Ø 10 mm	6 X 3 mm	Ø 12 mm	# 12.10.265
M8	15 mm	Ø 10 mm	8 X 3 mm	Ø 14 mm	# 12.10.270
M8	20 mm	Ø 10 mm	8 X 3 mm	Ø 14 mm	# 12.10.290
M8	24 mm	Ø 10 mm	8 X 3 mm	Ø 14 mm	# 12.10.292
M10	20 mm	Ø 13 mm	10 X 3 mm	Ø 17 mm	# 12.10.293

SCREW IN BUSHING »MZ«

Material: Zamak, Bright Zinc Plated (BZP)
 Type: Screw in by use of hex key. With countersunk collar

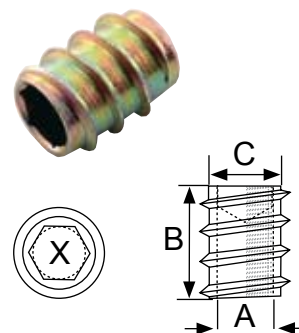
A	B	C	X = Hex	H = Head	Item No.
M6	13 mm	Ø 8 mm	6 x 3,5 mm	Ø 12 mm	# 12.10.257
M8	15 mm	Ø 10 mm	8 x 3,5 mm	Ø 14 mm	# 12.10.271



SCREW IN BUSHING »SK«

Material: Steel, Yellow Zinc Plated (YZP) or Zamak (YZP)
 Type: Screw in by use of hex key. No collar

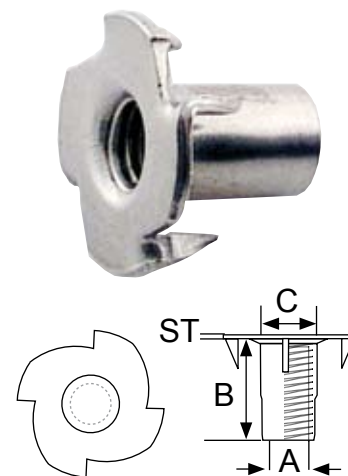
A	B	C	X = Hex	YZP	Material
M6	13,5 mm	Ø 8,25 mm	6 x 3 mm	# 12.10.460	Steel
M6	15 mm	Ø 8,5 mm	6 x 4,5 mm	# 12.10.461	Zamak



»T-NUT«

Material: Steel, Bright Zinc Plated (BZP) or Plain
 ST = Steel Thickness
 Type: Knock in, 4 Prongs

A	B	C	ST	Item No.	Finish
M4	5 mm	Ø 6,5 mm	0,8 mm	# 12.11.001	BZP
M5	8 mm	Ø 6,5 mm	0,8 mm	# 12.11.006	BZP
M6	8 mm	Ø 7,5 mm	1,2 mm	# 12.11.011	BZP
M6	11 mm	Ø 7,5 mm	1,2 mm	# 12.11.014	BZP
M6	15 mm	Ø 7,5 mm	1,2 mm	# 12.11.017	BZP
M8	10 mm	Ø 9,5 mm	1,2 mm	# 12.11.019	BZP
M8	15 mm	Ø 9,5 mm	1,5 mm	# 12.11.021	Plain
M10	11 mm	Ø 9,5 mm	1,5 mm	# 12.11.024	BZP
M10	16 mm	Ø 11,75 mm	1,6 mm	# 12.11.027	BZP



TOOL FOR INSERTING SCREW IN BUSHING

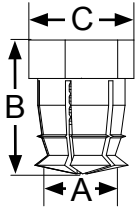
Material: Steel
 Type: Tool for inserting screw in bushing

Thread	Item No.
M6	# 12.10.300
M8	# 12.10.315
M10	# 12.10.320



BUSHINGS

KNOCK IN BUSHINGS »EXPANSION«

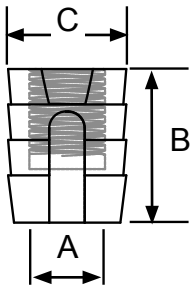


Material: Brass, Natural
 Type: Knock in. Without plastic ball or with ball for extra expansion

A	B	C	Type	Item No.
M4	7,5 mm	5,5 mm	No ball	# 12.10.335
M4	10 mm	10 mm	No ball	# 12.10.330
M6	11,5 mm	8 mm	No ball	# 12.10.340
M6	11,5 mm	8 mm	With ball	# 12.10.345

Pulling power: 100 Kg.

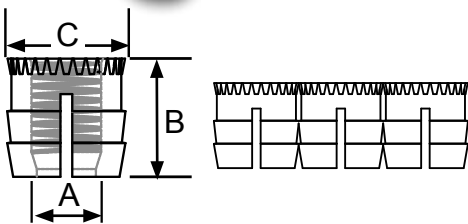
NYLON KNOCK IN BUSHING »N«



Material: White nylon
 Type: Knock in. No collar. Closed end.

A	B	C	Colour	Item N0.
M4	10 mm	Ø 8 mm	White	# 12.11.315
M6	10 mm	Ø 8 mm	White	# 12.11.410
M6	11 mm	Ø 10 mm	White	# 12.11.420
M6	13 mm	Ø 10 mm	White	# 12.11.440
M6	20 mm	Ø 10 mm	White	# 12.11.465

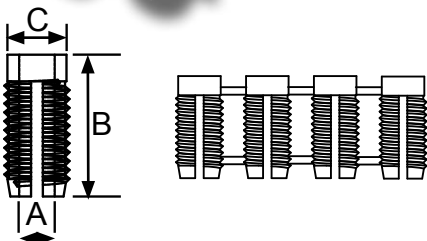
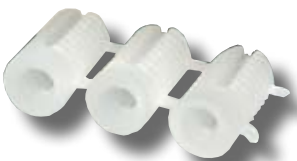
NYLON EXPANSION BUSHING »STRIPS«



Material: White nylon
 Type: Knock in. With knurled collar. In strips of 24 pcs.

A	B	C	Colour	Item N0.
M6	10 mm	Ø 10 mm	White	# 12.11.430
M6	13 mm	Ø 10 mm	White	# 12.11.450

SELF-WINDING EXPANSION NYLON BUSHING

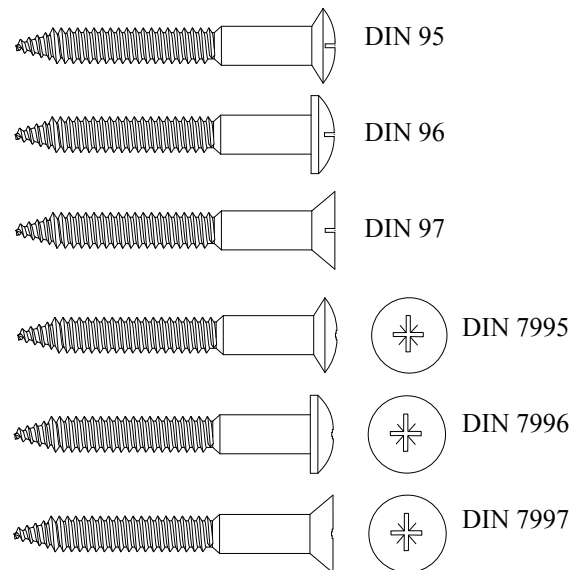


Material: White nylon
 Type: Knock in. In strips of 30 pcs.

A	B	C	Colour	Item N0.
Ø 3 mm	11,5 mm	Ø 5,5 mm	White	# 12.11.351

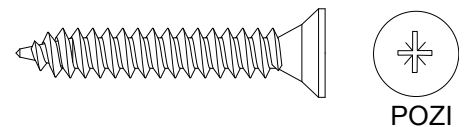
WOOD SCREWS

Material:	Brass, Stainless Steel, Steel, Yellow Zinc Plated
Diameter:	From Ø 1,6 mm up to Ø 6,0mm
Length:	From 8 mm up to 120 mm
Type:	Slotted with oval head DIN 95, round head DIN 96 or countersunk head DIN 97 Pozidrive with oval head DIN 7995, round head DIN 7996 or countersunk head DIN 7997
Item No.	11.07.603 etc.



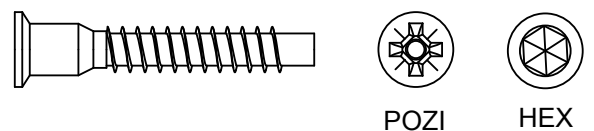
CHIPBOARD SCREWS DIN 7505

Material:	Steel, Zinc Plated (other materials & finishes on request)
Thread:	From Ø 3 mm up to Ø 6 mm
Lengths:	From 12 mm up to 180 mm
Type:	Pozidrive with countersunk head (see illustration)
Item No.	# 11.10.511 etc.
Packing:	SISO box packing or bulk (see illustration)



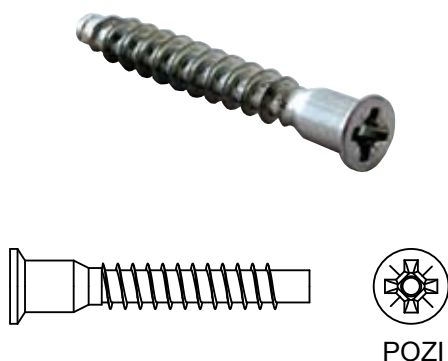
ASSEMBLA SCREWS Ø 5 MM

Material:	Steel, Bright Zinc Plated (other materials & finishes on request)
Thread:	Ø 5 mm
Lengths:	30/40 mm or 50 mm
Type:	Pozidrive or 4 mm hex (see illustration) With & without hole for cover cap
Item No.	# 12.17.005 etc.



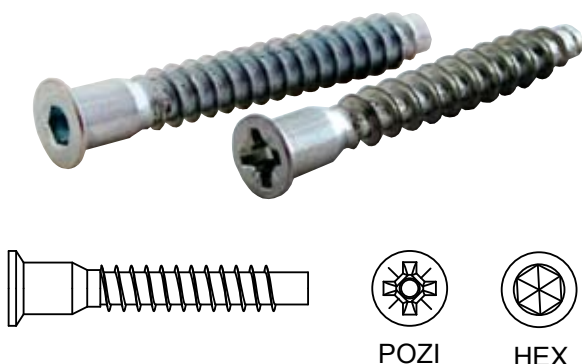
SCREWS

ASSEMBLA SCREWS Ø 6,3 MM



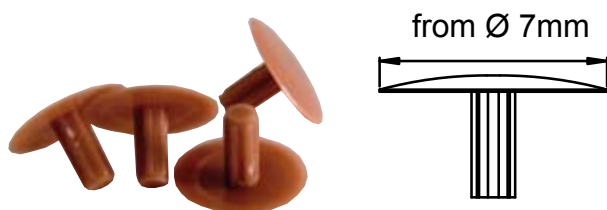
Material:	Steel, Bright Zinc Plated (other materials & finishes on request)
Thread:	Ø 6,3 mm
Lengths:	40 mm or 50 mm
Type:	Pozidrive (see illustration). With & without hole for cover cap
Item No.	# 12.17.021 etc.

ASSEMBLA SCREWS Ø 7 MM



Material:	Steel, Bright Zinc Plated (other materials & finishes on request)
Thread:	Ø 7 mm
Lengths:	40/45/50/60/70/85 mm
Type:	Pozidrive or 4 mm hex (see illustration). With & without hole for cover cap
Item No.	# 12.17.027 etc.

COVER CAPS FOR ASSEMBLA SCREWS Ø 5, 6,3 & 7 MM

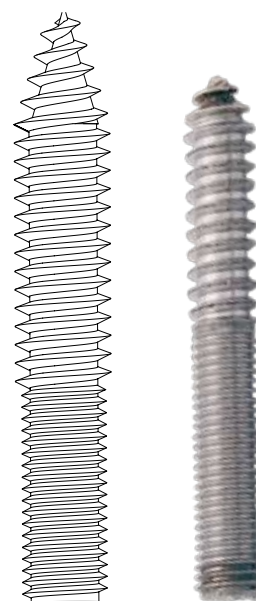


Material:	Plastic, White, black, grey, brown, teak (other colours on request)
Size:	Ø 7 mm
Item No.	# 12.17.021 etc.

HANGERBOLTS

Material:	Steel		
Finish:	Yellow Zinc or Bright Zinc		
Size	Item No.:	Size	Item No.:
M4 x 25 mm	# 12.13.000	M8 x 100 mm	# 12.13.037/38
M4 x 50 mm	# 12.13.001	M10 x 50 mm	# 12.13.150
M6 x 50 mm	# 12.13.006/08	M10 x 60 mm	# 12.13.160/61
M6 x 60 mm	# 12.13.016/17	M10 x 70 mm	# 12.13.170
M8 x 50 mm	# 12.13.022/23	M10 x 80 mm	# 12.13.180
M8 x 60 mm	# 12.13.027	M10 x 90 mm	# 12.13.190
M8 x 70 mm	# 12.13.031/32	M10 x 100 mm	# 12.13.100
M8 x 80 mm	# 12.13.035	M10 x 120 mm	# 12.13.205

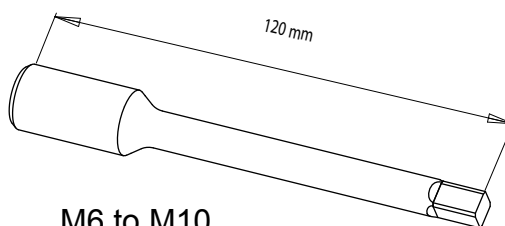
Other sizes on request



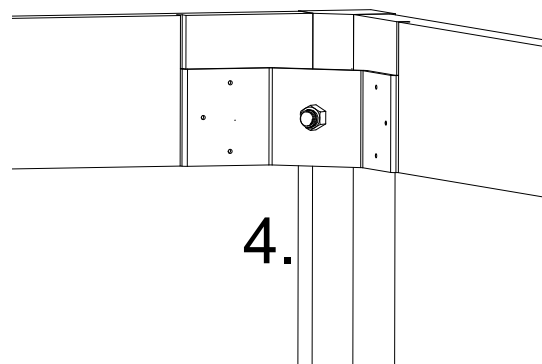
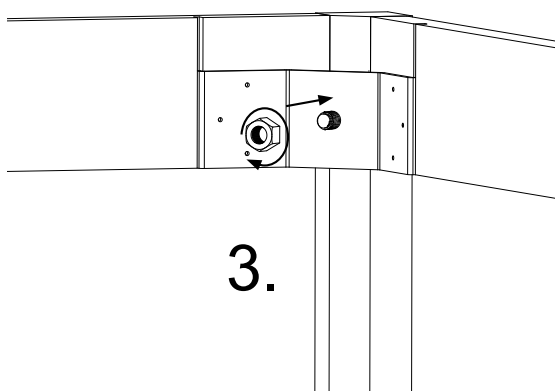
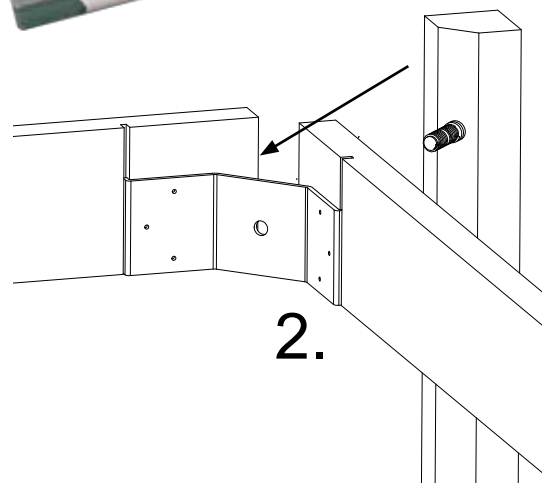
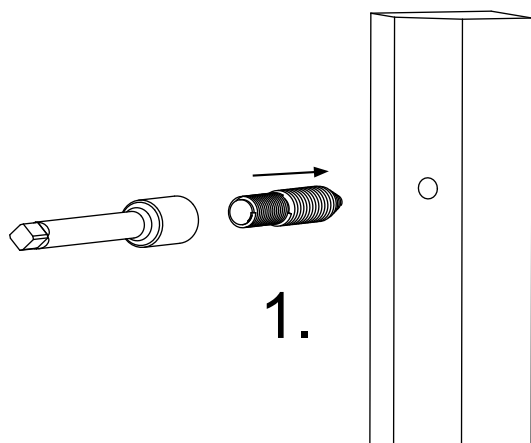
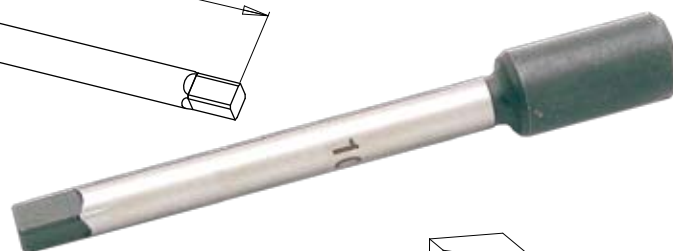
M4 to M10

TOOL FOR INSERTING HANGERBOLTS

Size	Item No.:
M6	# 12.13.100
M8	# 12.13.105
M10	# 12.13.115



M6 to M10





- high quality furniture fittings

Item No.: 99.00.031-0 13.10.2008

SISO A/S

Mileparken 11 Phone: (+45) 45 830 900
DK - 2740 Skovlunde (Copenhagen) Fax: (+45) 45 830 444
Denmark E-mail: siso@siso.dk Web: www.siso.dk

